

The **MSZ-LN** Premium range of wall mounted air conditioning units, combines a number of advanced technologies together with sophisticated design. Engineered to optimise air quality, energy - efficiency, comfort and control, this stylish model is an excellent choice for residential or small commercial applications. With a choice of 4 colours, 6 capacities and the option to connect as a single or multi-split system, the Premium series offers great design flexibility.

### Compatible with:



### Key Features & Benefits:

- Built-in Plasma Quad Technology neutralises viruses, bacteria, allergens, PM2.5, mould and dust, and inhibit inhibits 99.8% of SARS-CoV-2\*.
- Energy efficient, ultra-quiet operation with a choice of fan speeds.
- 3D i-see sensor grille provides energy efficient, customised comfort by automatically monitoring room occupancy, position and body temperatures.
- Built-in Wi-Fi interface enables system monitoring via the Mitsubishi Electric MELCloud app, plus voice control - compatible with Amazon Alexa and Google Assistant enabled devices.
- User-friendly backlit controller for remote operation including scheduling options.
- Dual-Barrier coating to the heat exchanger, fan and air to prevents dust and grease accumulation to the unit.



GOOD DESIGN  
AWARD 2016

\* Derived from and subject to test results, for and on behalf of Mitsubishi Electric conducted at the Microbial Testing Laboratory, Textile Quality and Technology Center, Kobe, Japan



# MITSUBISHI ELECTRIC MSZ-LN R32



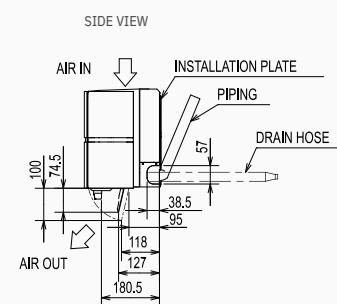
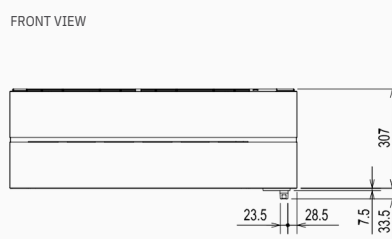
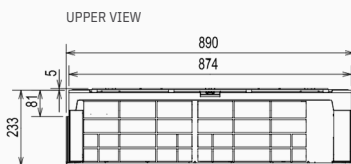
Think air conditioning

MSZ-LN INDOOR UNITS		MSZ-LN18VG2 R/B/W/W	MSZ-LN25VG2 R/B/W/W	MSZ-LN35VG2 R/B/W/W	MSZ-LN50VG2 R/B/W/W	MSZ-LN60VG2 R/B/W/W
CAPACITY (kW)	Heating (nominal)	2.0 (0.9 - 4.0)	3.2 (0.8 - 5.4)	4.0 (1.0 - 6.3)	6.0 (1.0 - 8.2)	6.8 (1.8 - 9.3)
	Cooling (nominal)	1.8 (0.9 - 3.0)	2.5 (1.0 - 3.5)	3.5 (0.8 - 4.0)	5.0 (1.0 - 6.0)	6.1 (1.4 - 6.9)
	Heating (UK)	-	2.64 (0.66 - 4.45)	3.3 (0.83 - 5.2)	4.94 (0.82 - 6.75)	5.6 (1.48 - 7.66)
	Cooling (UK)	-	2.48 (0.99 - 3.47)	3.47 (0.79 - 3.96)	4.95 (0.99 - 5.94)	6.05 (1.38 - 6.84)
SHF (nominal)	-	0.97	0.90	0.77	0.77	0.75
COP / EER (nominal)	-	5.52 / 5.15	5.00 / 4.27	4.05 / 3.62	3.76 / 3.41	3.76 / 3.41
SCOP / SEER (BS EN14825)	-	5.2 / 10.5	5.1 / 9.5	4.6 / 8.5	4.6 / 7.5	4.6 / 7.5
ErP ENERGY EFFICIENCY CLASS	Heating/Cooling	-	A+++ / A+++	A+++ / A+++	A++ / A+++	A++ / A++
AIRFLOW (l/s)	Heating (SLo-Lo-Mi-Hi-SHi)	67-95-118-142-240	67-95-118-142-240	71-97-118-142-228	90-107-142-178-262	110-158-192-227-262
	Cooling (SLo-Lo-Mi-Hi-SHi)	71-97-118-147-198	71-97-118-147-198	71-97-118-147-213	95-127-148-177-232	118-147-177-212-262
PIPE SIZE mm (in)	Gas	9.52 (3/8")	9.52 (3/8")	9.52 (3/8")	9.52 (3/8")	12.7 (1/2")
	Liquid	6.35 (1/4")	6.35 (1/4")	6.35 (1/4")	6.35 (1/4")	6.35 (1/4")
SOUND PRESSURE LEVEL (dBA)	Heating (SLo-Lo-Mi-Hi-SHi)	19-24-29-36-45	19-24-29-36-45	19-24-29-36-45	25-29-34-39-47	29-37-41-45-49
	Cooling (SLo-Lo-Mi-Hi-SHi)	19-23-29-36-42	19-23-29-36-42	19-24-29-36-43	27-31-35-39-46	29-37-41-45-49
SOUND POWER LEVEL (dBA)	-	58	58	58	60	65
DIMENSIONS (mm)	Width x Depth x Height	890 x 233 x 307	890 x 233 x 307	890 x 233 x 307	890 x 233 x 307	890 x 233 x 307
WEIGHT (kg)	-	15.5	15.5	15.5	15.5	15.5
ELECTRICAL SUPPLY	-	Fed by Outdoor Unit	Fed by Outdoor Unit	Fed by Outdoor Unit	Fed by Outdoor Unit	Fed by Outdoor Unit
FUSE RATING (BS88) - HRC (A)	-	6	6	6	6	6
INTERCONNECTING CABLE No. CORES	-	4	4	4	4	4

Notes: MSZ-LN18VG only available with R32 MXZ Multi-Split outdoor units: Ruby Red (R), Onyx Black (B), Pearl White (V), Natural White (W).

MUZ-LN OUTDOOR UNITS		N/A MULTI-SPLIT ONLY	MUZ-LN25VG2	MUZ-LN35VG2	MUZ-LN50VG2	MUZ-LN60VG2
SOUND PRESSURE LEVEL (dBA)	Heating/Cooling	-	49 / 46	50 / 49	54 / 51	55 / 55
SOUND POWER LEVEL (dBA)	Cooling	-	60	61	64	65
WEIGHT (kg)	-	-	35	35	40	55
DIMENSIONS (mm)	Width x Depth x Height	-	800 x 285 x 550	800 x 285 x 550	800 x 285 x 714	840 x 330 x 880
ELECTRICAL SUPPLY	-	-	220-240v, 50Hz	220-240v, 50Hz	220-240v, 50Hz	220-240v, 50Hz
PHASE	-	-	Single	Single	Single	Single
SYSTEM POWER INPUT (kW)	Heating/Cooling (nominal)	-	0.580 / 0.485	0.800 / 0.820	1.480 / 1.380	1.810 / 1.790
	Heating/Cooling (UK)	-	0.523 / 0.406	0.722 / 0.686	1.335 / 1.151	1.632 / 1.494
STARTING CURRENT (A)	-	-	3.0	4.0	6.8	7.9
SYSTEM RUNNING CURRENT (A)	Heating/Cooling [MAX]	-	3.0 / 2.5 [7.1]	4.0 / 3.9 [9.9]	6.8 / 6.3 [13.9]	7.9 / 7.9 [15.2]
FUSE RATING (BS88) - HRC (A)	-	-	10	10	16	16
MAINS CABLE No. CORES	-	-	3	3	3	3
MAX PIPE LENGTH (m)	-	-	20	20	30	30
MAX HEIGHT DIFFERENCE (m)	-	-	12	12	12	15
CHARGE REFRIGERANT (kg) / CO <sub>2</sub> EQUIVALENT (l) - R32 (GWP 675) - 7m	-	-	1.0 / 0.68	1.0 / 0.68	1.25 / 0.85	1.45 / 0.98
MAX ADDITIONAL REFRIGERANT (kg) / CO <sub>2</sub> EQUIVALENT (l) - R32 (GWP 675)	-	-	0.26 / 0.18	0.26 / 0.18	0.26 / 0.18	0.46 / 0.32

## MSZ-LN25/35/50/60VG2 R/B/W/W DIMENSIONS



Country of origin: United Kingdom - Italy - Turkey - Japan - Thailand - Malaysia. ©Mitsubishi Electric Europe 2023. Mitsubishi and Mitsubishi Electric are trademarks of Mitsubishi Electric Europe B.V. The company reserves the right to make any variation in technical specification to the equipment described, or to withdraw or replace products without prior notification or public announcement. Mitsubishi Electric is constantly developing and improving its products. All descriptions, illustrations, drawings and specifications in this publication present only general particulars and shall not form part of any contract. All goods are supplied subject to the Company's General Conditions of Sale, a copy of which is available on request. Third-party product and brand names may be trademarks or registered trademarks of their respective owners.

Note: Refer to 'Installation Manual' and 'Instruction Book' for further 'Technical Information'. The fuse rating is for guidance only and please refer to the relevant databook for detailed specification. It is the responsibility of a qualified electrician/electrical engineer to select the correct cable size and fuse rating based on current regulation and site specific conditions. Mitsubishi Electric's air conditioning equipment and heat pump systems contain a fluorinated greenhouse gas, R410A (GWP:2088), R32 (GWP:675), R407C (GWP:1774), R134a (GWP:1430), R513A (GWP:631), R454B (GWP:466), R1234ze (GWP:7) or R1234yf (GWP-4). \*These GWP values are based on Regulation (EU) No 517/2014 from IPCC 4th edition. In case of Regulation (EU) No.626/2011 from IPCC 3rd edition, these are as follows. R410A (GWP:1975), R32 (GWP:550), R407C (GWP:1650) or R134a (GWP:1300).

Effective as of April 2023

